

Case Study:

Baccarat Hotel & Residences

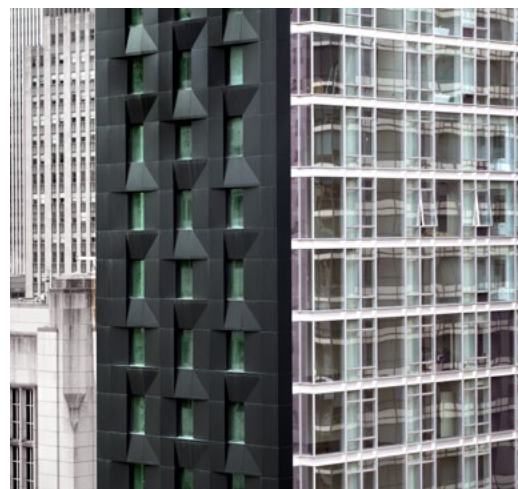




The flagship of the latest luxury hotel brand from Starwood Capital Group, the newly opened Baccarat Hotel & Residences building in midtown Manhattan commands outstanding views of Manhattan landmarks including Central Park, the Empire State Building and its neighbor, the Museum of Modern Art (MoMA).

The tower was designed as a destination that would embody the elegance and artistry of Baccarat—the luxury crystal brand founded by King Louis XV of France more than 250 years ago. The architecture manifests the concept of an elegant crystalline box as a showcase for the Baccarat brand’s “distinct art of gracious living.” To express the faceted, shimmering design and to create an illusion of depth on the façade and contrast between the metal and glass elements employed, the design-build team clad the 50-story tower in a glimmering skin of Reynobond® 4mm FR Composite Material finished in a custom jet-black metallic paint coating.

The tower’s exterior is a study in contrast. The main structural elements, the eastern and western elevations, are sheathed in faceted Reynobond® Composite Material along with the base, the top row and coping over the curtain wall on the northern and southern faces, the loading dock, bulkhead and four stories on the face of an adjacent building. Those solid, matte surfaces frame the reflective northern and southern façades that are clad in shimmering glass.



Architect	Skidmore, Owings & Merrill (SOM) LLP
Contractor	Tishman Construction Corporation
Fabricator/ Installer	IDA International
Product	110,000 square feet of Reynobond® 4mm FR Composite Material
Product	127,400m ² , Reynobond® 4mm FR Composite Material
Color	Color: Custom Metallic Black Coating: Colorweld® 500XL
Application	Rainscreen system