

Case Study:

University of Chicago Medicine Center for Care & Discovery



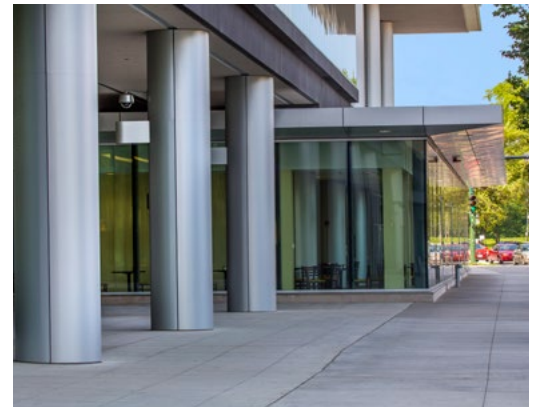
Reynobond™



The University of Chicago Medicine Center for Care and Discovery is a 10-story medical facility located in Chicago, Illinois. Home to world-class medical and surgical care, the Center for Care and Discovery houses 436 beds, 52 intensive care beds, 9 suites for advanced imaging and interventional procedures, and 23 operating rooms designed to accommodate hybrid and robotic procedures.

The 1.2 million square foot facility is the largest building on campus and used Reynobond® 4mm FR Composite Material in the design for durability leaving the Center for Care and Discovery a standing staple on campus for years to come.

Using a dry-joint rain-screen composite panel system, Creative Panel fabricated and installed over 185,783 square feet of Reynobond® 4mm FR Composite Material in a high performing, coil coated Colorweld® 500XL Bright Silver Metallic and three custom colors, (Gray, Dark Green, and Orange) all backed by a 30-year warranty.



Project	University of Chicago Medicine Center for Care & Discovery, Chicago
Architects	Rafael Vinoly Architects - DesignCannon Design - Health Care Planning
General Contractor	Gilbane W.E. O'Neil
Fabricator / Installer	Creative Panel
Product	Reynobond® 4mm FR
Total Square Feet	185,783
Finish Color	Bright Silver Metallic Custom: Gray, Dark Green, Orange
Paint System	Colorweld® 500XL